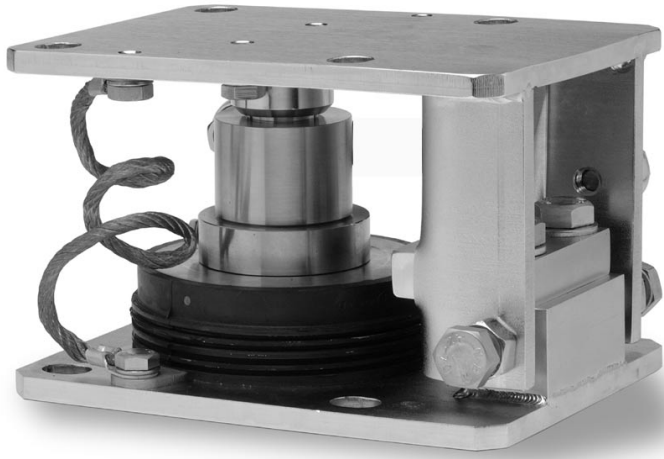


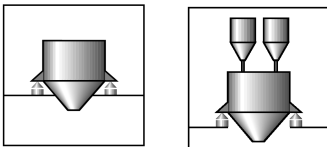
RTN/MA...

Weighing module for
RTN load cells 1 t...33 t



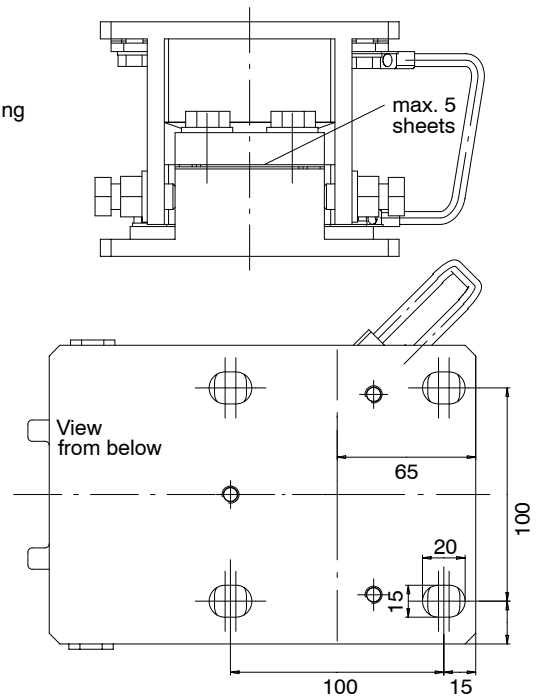
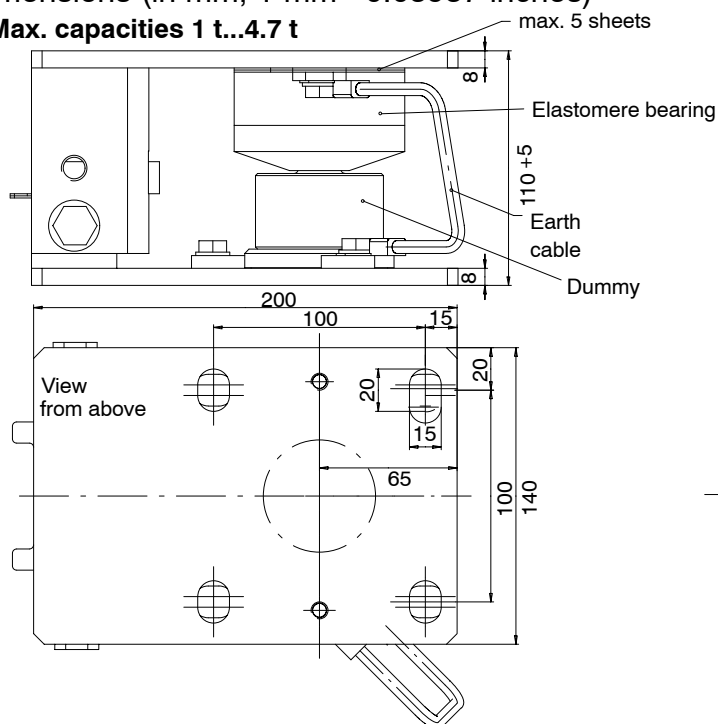
Special features

- Compact design
- Equipped with elastomere bearing
- Integrated lift-off securing device
- Dummy function
- Material: stainless steel

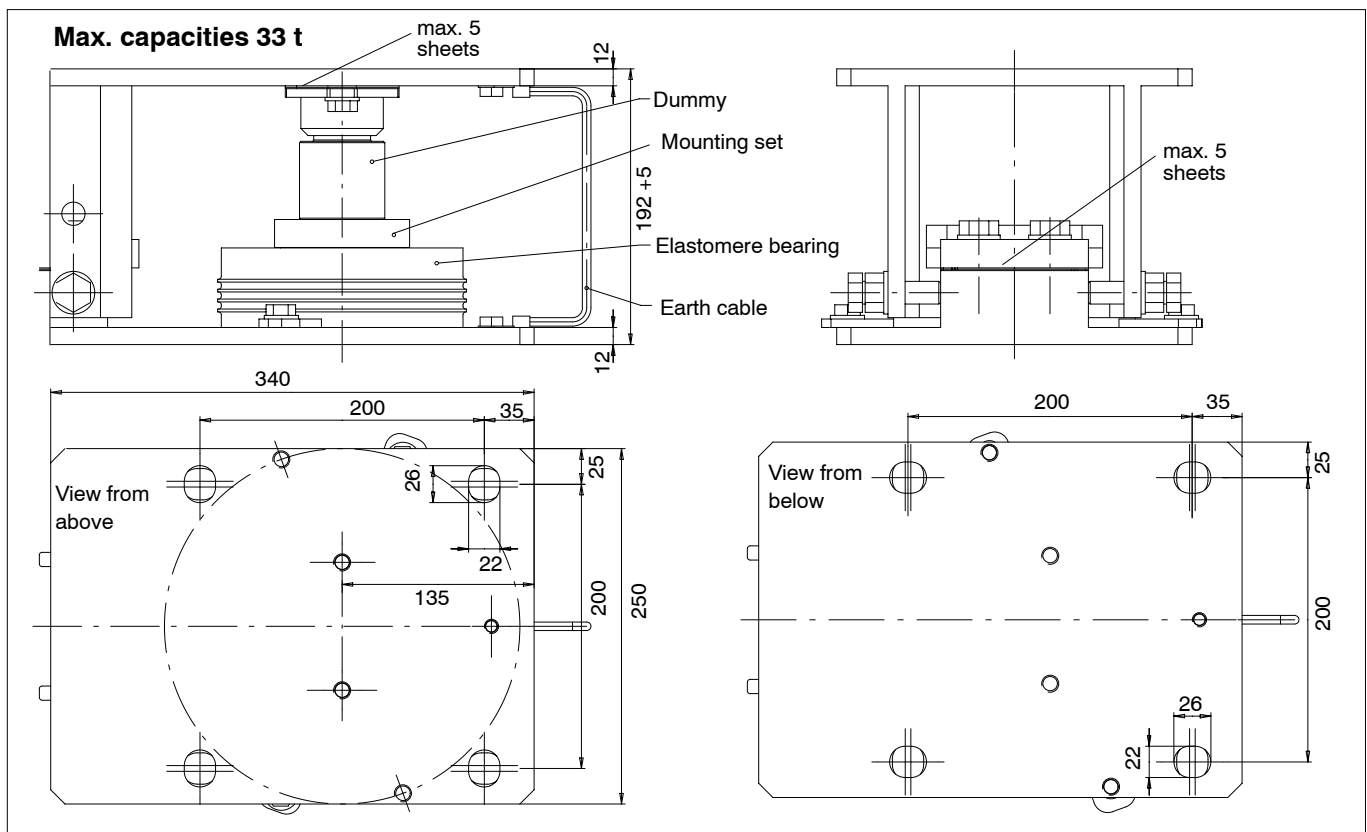
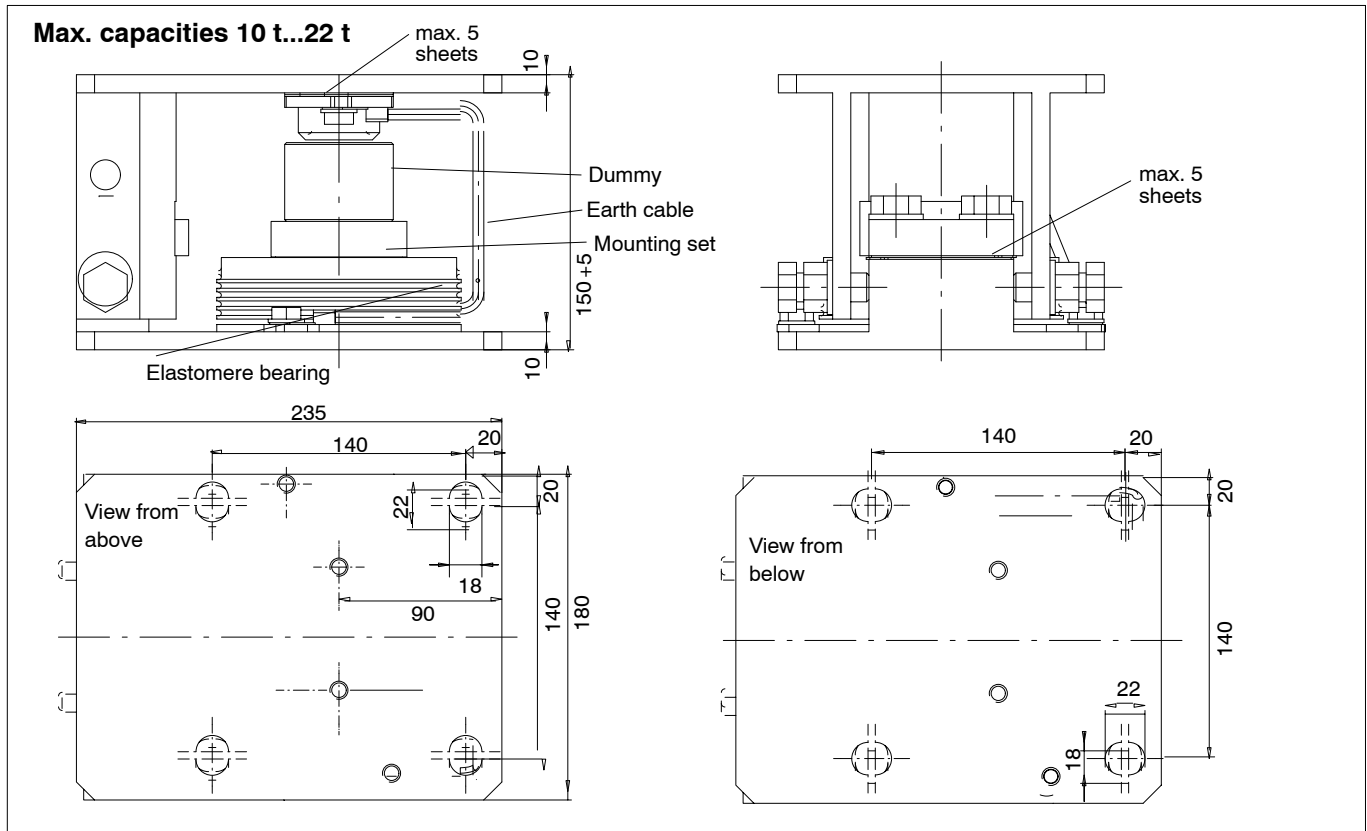


Dimensions (in mm; 1 mm= 0.03937 inches)

Max. capacities 1 t...4.7 t



Dimensions in mm (1 mm = 0.03937 inches)



Specifications

Type		RTN/MAR2.2T		RTN/MAR4.7T	RTN/MAR22T			RTN/MA33T
Max. capacity of the load cell	t	1	2.2	4.7	10	15	22	33
Limit load	% of E_{max}	150						
Restoring force, for 1mm side offset of applied load	kN	0.24		0.42	1.4			1.7
Max. permissible horizontal offset	mm	± 2			± 6			
Vertical displacement at rated capacity	mm	<0.8			<0.5			<0.9
Max. permissible lifting force ¹⁾	kN	20			50			30
Material: Metall parts		stainless steel						galvanized material
Elastomere bearing:		Neoprene (Chlorbutadien caoutchouc)						(Chlorbutadien caoutchouc)
Weight, approx.	kg	12			15			18
Min. lifting height to install the load cell	mm	<10						
Height balance	mm	5						

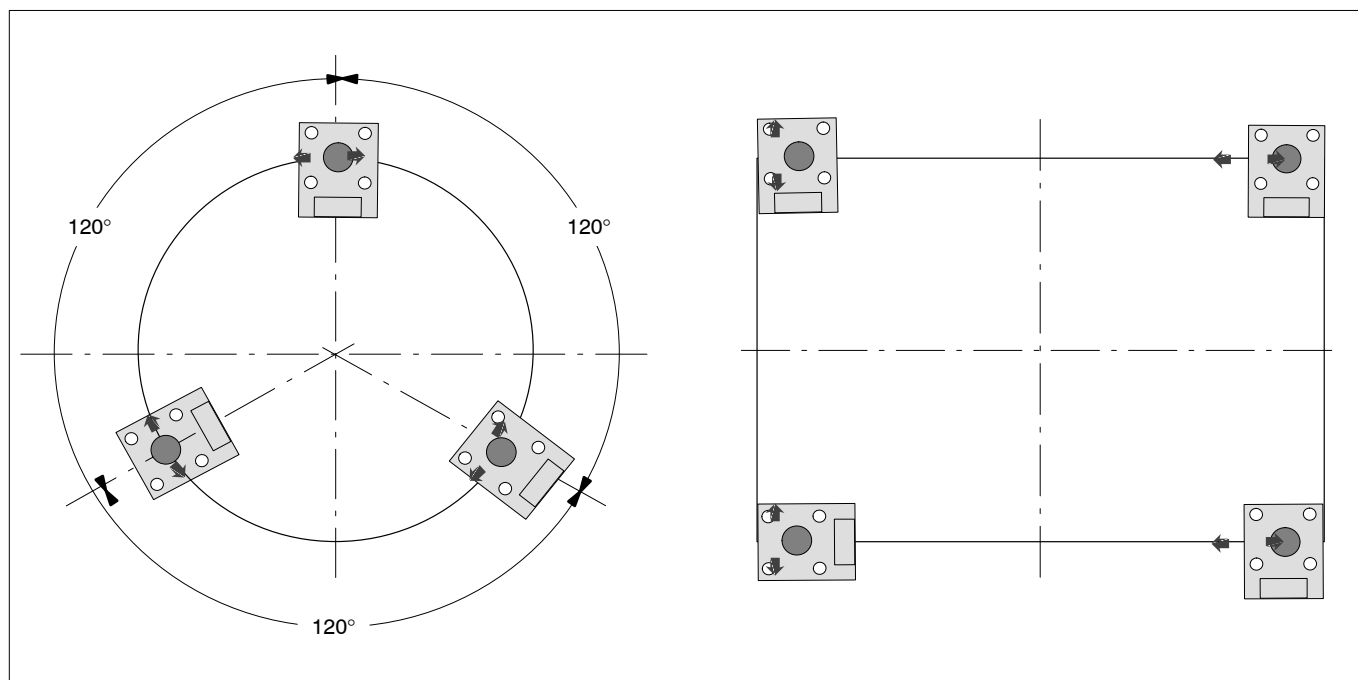
¹⁾ These specifications are based on the tensile strength only (without any additional safety factor)

Part number (e.g.): 1-RTN/MAR22T

Scope of supply: Weighing module complete mounted (without RTN load cell). For additional information on the appropriate load cells, please refer to our data sheet RTN...

Attentions: Instead of the load cell, a dummy is installed, which is able to support the load up to the specified values above. Please take care you are able to lift the tank approx. 10 mm to change the dummy to the RTN load cell.

Mounting examples of weighing modules



Attention: The represented bearing arrangements consider only weighing–technical criteria. The carrying and stability must be examined and guaranteed in each case by the operator.

Modifications reserved.

All details describe our products in general form only. They are not to be understood as express warranty and do not constitute any liability whatsoever.

B0977-3.0 en

Hottinger Baldwin Messtechnik GmbH

Im Tiefen See 45, D-64293 Darmstadt, Germany
Tel.: +49 6151 803-0; Fax: +49 6151 8039100
E-mail: support@hbm.com www.hbm.com



measurement with confidence